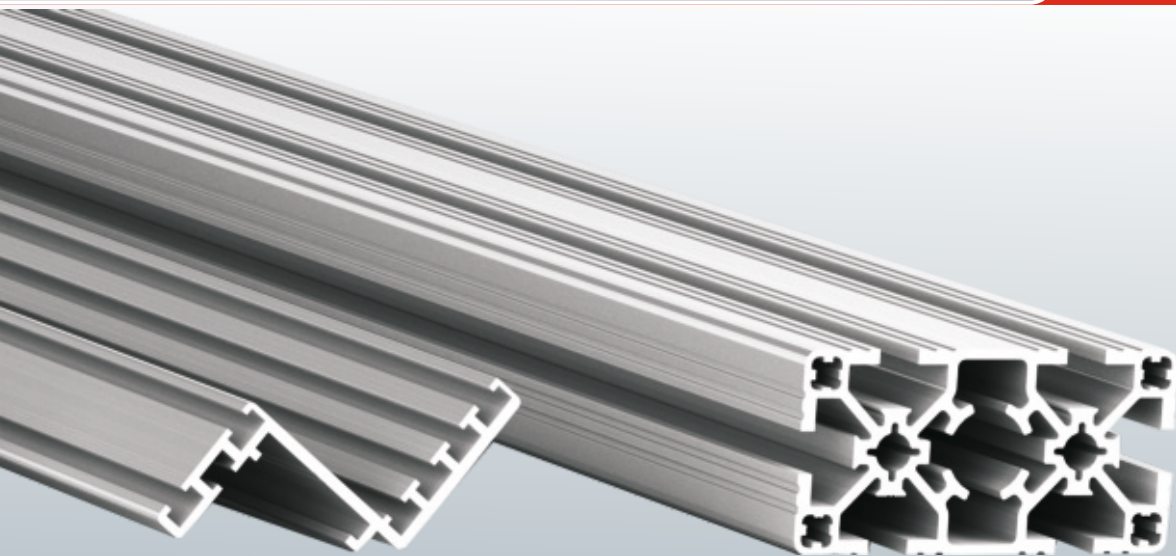




Committed to Perfection



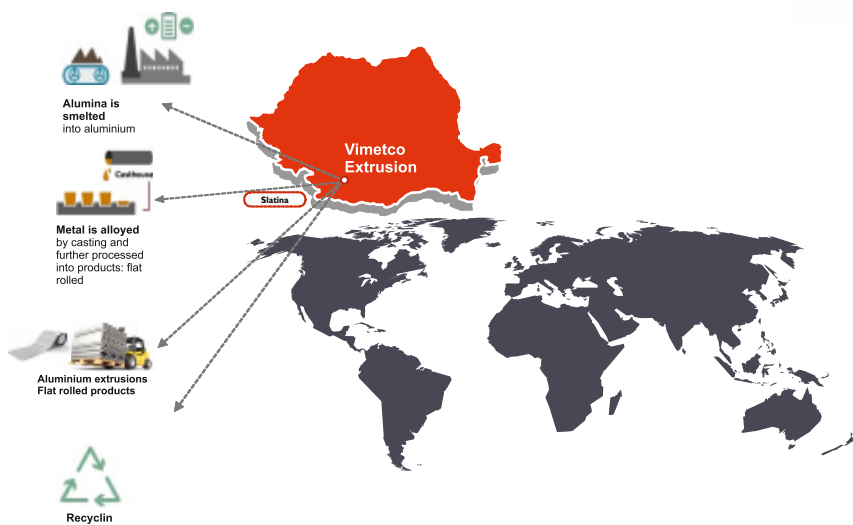
preview

**vimetco**  
extrusion 



## Aluminium simply essential

# Vimetco Group - globally and vertically integrated



Vimetco Extrusion is a subsidiary of Alro SA. Located in Slatina, Romania with a stone's throw from the cast house, Vimetco Extrusion benefits from secure supply of high quality extrusion billets.

Company was established in 2006, as a separate entity, when the extrusion facilities were restructured, guided by the initiative and motivation of a new management team comprised of international experienced professionals, along with full support from ALRO Management.

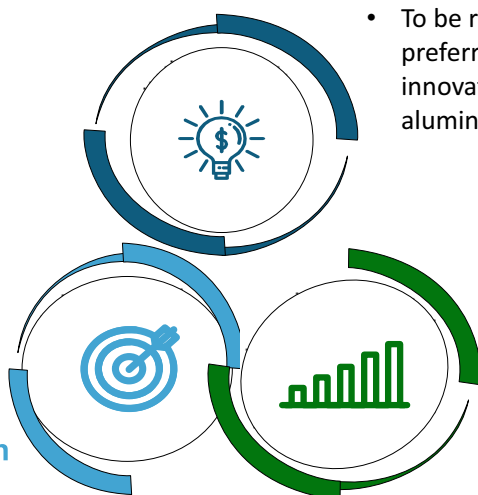
Vertically integrated in the Group, Vimetco Extrusion has become a reliable supplier of aluminium profiles on European Market, building long term partnerships based on professionalism, fast delivery, high quality products and service.

Operating 3 extrusion presses and focusing its production on 6xxx series alloys, in conformity with EN standards, Vimetco Extrusion's products are sold to a variety of applications all over Europe.

Throughout modern technological offset and latest engineering approach, Vimetco Extrusion's goal is to permanently exceed customer expectations by enlarged capabilities, increased capacities and high value added products intended to streamline current and future supply chain and generate long term sustainable business.

### Vision

- To be recognized as the preferred strategic partner of innovative, engineered aluminium profile solutions



### Mission

- Leading European aluminium extruder offering unique solutions

### Values

- People
- Service
- Quality

## Committed to Perfection

# Our customers are our partners - their satisfaction is our success!

Vimetco Extrusion is your innovation-driven partner committed to delivering the best solutions, quality, and service in the aluminium profiles and products industry. We are the trusted choice for clients who value precision, flexibility, and excellence in every extrusion project.

### What makes us your best choice:

✓ Vimetco Extrusion is your innovation-driven partner committed to delivering the best solutions, quality, and service in the aluminium profiles and products industry. We are the trusted choice for clients who value precision, flexibility, and excellence in every extrusion project.

### What makes us your best choice:

✓ High Quality and Precision: producing extrusions that meet the highest industry standards

✓ State-of-the-Art Technology: our investment in the latest extrusion technology allows us to deliver complex, high-performance profiles with efficiency and precision. High Quality and Precision: producing extrusions that meet the highest industry standards

✓ State-of-the-Art Technology: our investment in the latest extrusion technology allows us to deliver complex, high-performance profiles with efficiency and precision.



✓ Added value operations: one stop shop, providing a full range of additional fabrication services

✓ Flexibility and Versatility: ability to deliver diverse profiles, combined with our in-house fabrication services

✓ Commitment to Sustainability: we prioritize environmentally responsible practices by using recyclable aluminum and optimizing our processes to reduce waste

✓ Customer-Centric Approach: delivering tailored solutions and maintaining close collaboration with our partners

✓ Proven Track Record: With years of experience and a long list of satisfied customers, we have built a reputation for reliability and excellence.





# Aluminium simply essential

## Production capabilities

Our state-of-the-art production facility, equipped with 3 high-capacity extrusion presses, enables us to achieve 35,000 tons of annual output. This production capability, combined with our expertise in working with various aluminum alloys-6060,6063, 6005, 6082, and 6061-makes us a versatile and reliable partner for clients across a wide range of industries.



## Production capabilities

Specifications	3500 NW Press	1650 NW Press	1900 NW Press
<input type="checkbox"/> Billet Ø	<input type="checkbox"/> 10 inch	<input type="checkbox"/> 7 inch	<input type="checkbox"/> 7 inch
<input type="checkbox"/> Maximum Width mm	<input type="checkbox"/> 420	<input type="checkbox"/> 180	<input type="checkbox"/> 250
<input type="checkbox"/> Minimum weight kg/m	<input type="checkbox"/> 0.5	<input type="checkbox"/> 0,1	<input type="checkbox"/> 0,1
<input type="checkbox"/> Maximum weight kg/m	<input type="checkbox"/> 13	<input type="checkbox"/> 2	<input type="checkbox"/> 2,5
<input type="checkbox"/> Maximum length mm	<input type="checkbox"/> 15000	<input type="checkbox"/> 10000	<input type="checkbox"/> 13000



Automatic packing line- a new step towards a fully integrated, modern production facility! Following the success of our recent investment in the new 7-inch extrusion line, which significantly increased our production capacity and efficiency, the focus moved on modernizing our downstream operations.

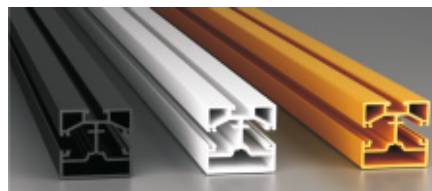


The automatic packing line comes as a natural upgrade, to fully capitalize on the improvements brought by the extrusion line, maximizing the output potential, improving product quality and consistency, enhancing safety and compliance.

### Added value services - machining, surface treatments and welding

In our continuous efforts to suit our customers' needs, reduce its overhead and streamline the supply chain, Vimetco Extrusion has constantly invested in its mechanical workshop. We are currently adding value to our extruded profiles through a various of fabrication processes:

- ✓ Precise cutting: lengths from 20 mm - 400 mm to +/- 0.5 mm, with possible angle cutting (30, 45, 90)
- ✓ Cutting of longer units: 400-3000 mm, tolerance of +/- 1 mm
- ✓ Milling: 0-800 mm, width 0-200 mm (maximum length 6000 mm)
- ✓ Hole: 0-27 mm
- ✓ Threading: M1-M24 mm
- ✓ Punching: From one hole punching to multiple hole punching
- ✓ Deburring
- ✓ Various assemblies (nut screw assembly, EPDM tape adhesive, etc.)
- ✓ Vibro-finishing
- ✓ CNC
- ✓ Packaging (dedicated according to customers' specific requirements)



### Anodizing and painting:

Surface treatment products: whether anodized or powder coated in different shades, Vimetco Extrusion's profiles are meant to shorten customers' supply chain Anodizing microns from  $\geq 5 \mu\text{m}$  up to  $\geq 20 \mu\text{m}$ , E6/C35 (E-5).

Various powder coating shades in gloss 70-80% or matt 30% levels with the following RAL class codes  $\rightarrow$  1000, 5000, 6000, 7000, 8000, 9000 etc.



### Unleash the Power of Aluminium – Welded to Perfection!

Aluminum welding services offer the perfect combination of lightweight durability, corrosion resistance, and customization for aluminium beams, trusses, tail lifts and different other welded products. By choosing our expertly welded aluminum components, you gain high-performance solutions that enhance efficiency, competitive costs, and ensure lasting strength in any application.

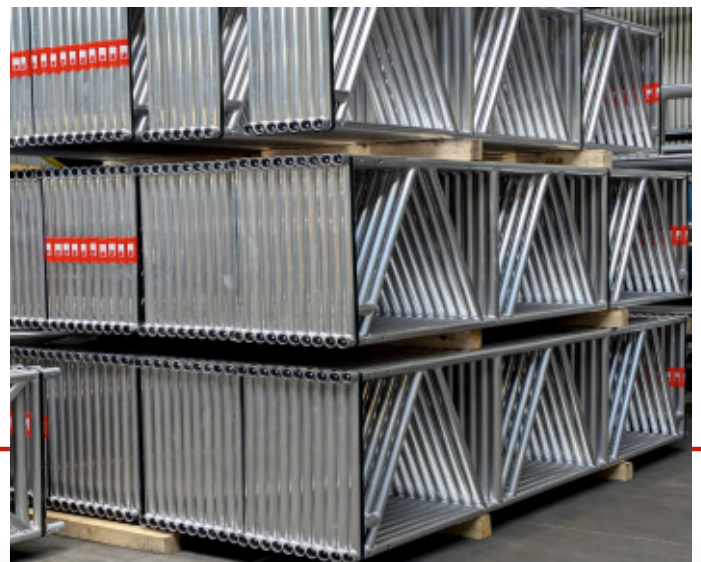
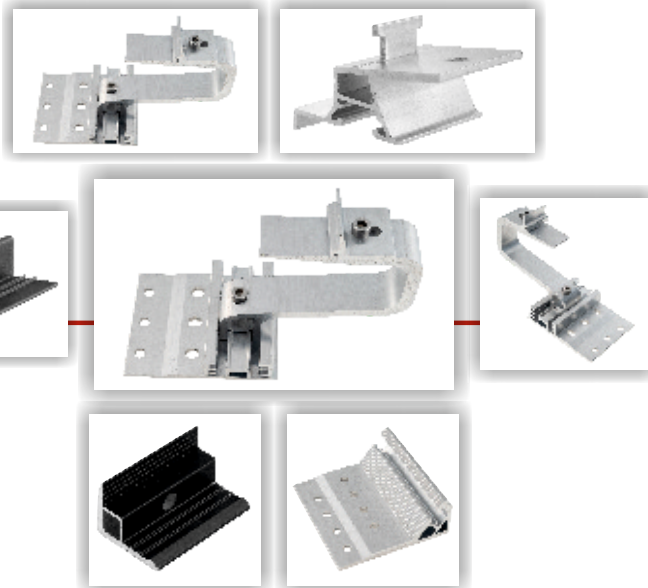


## Aluminium simply essential

### Sneak peak in our Added Value products

Vimetco Extrusion development strategy is targeting increase of the value-added products and high value-added products: solar assembled parts, solar hook systems, advertising panels profiles, construction beams, aluminium hinges, lifting columns, professional cleaning trolleys, hi-tech loudspeakers.

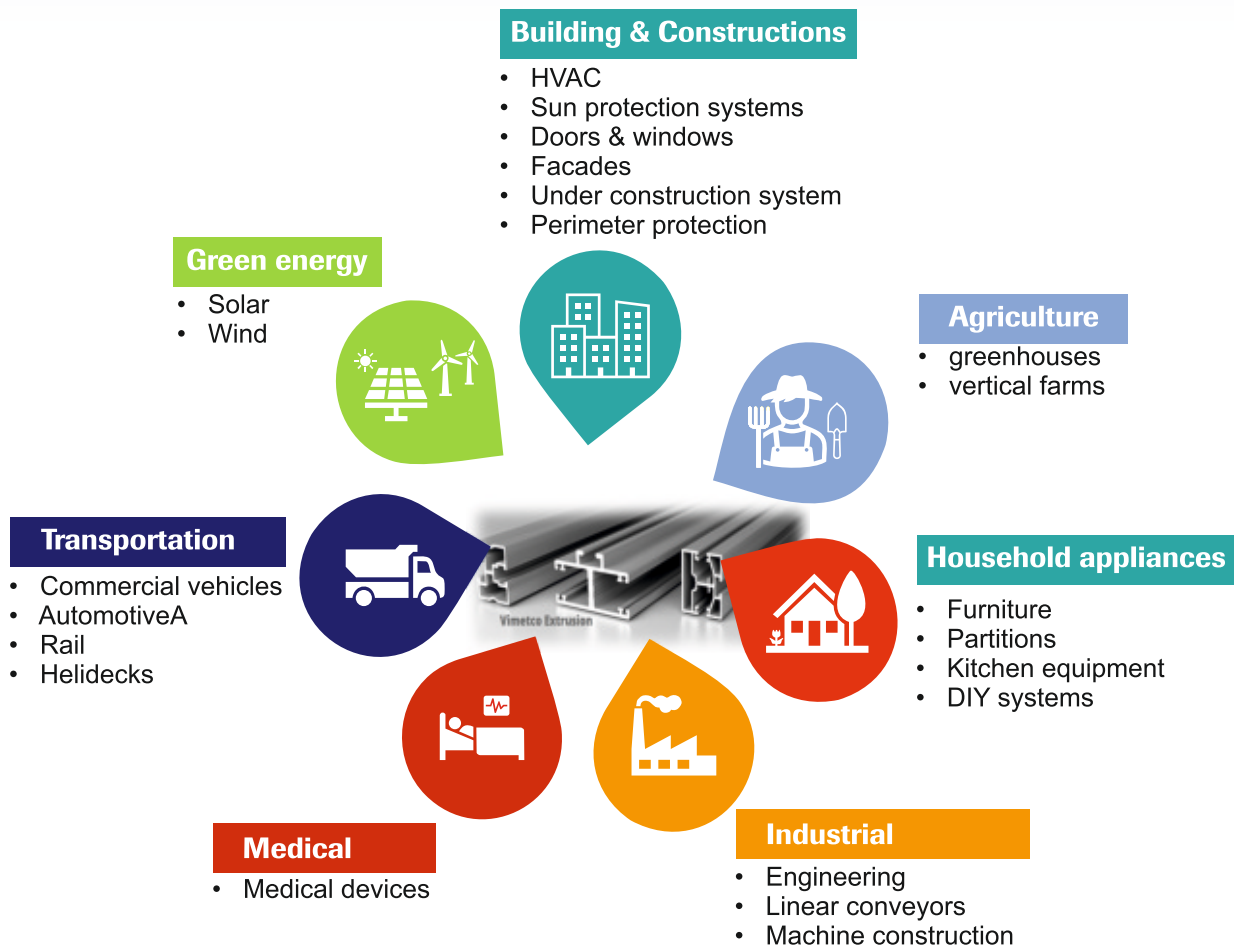
Through constant investment and capabilities upgrade, VE became reliable partner for its customers, providing high value-added products being One stop shop for several industries.



## Market segmentation

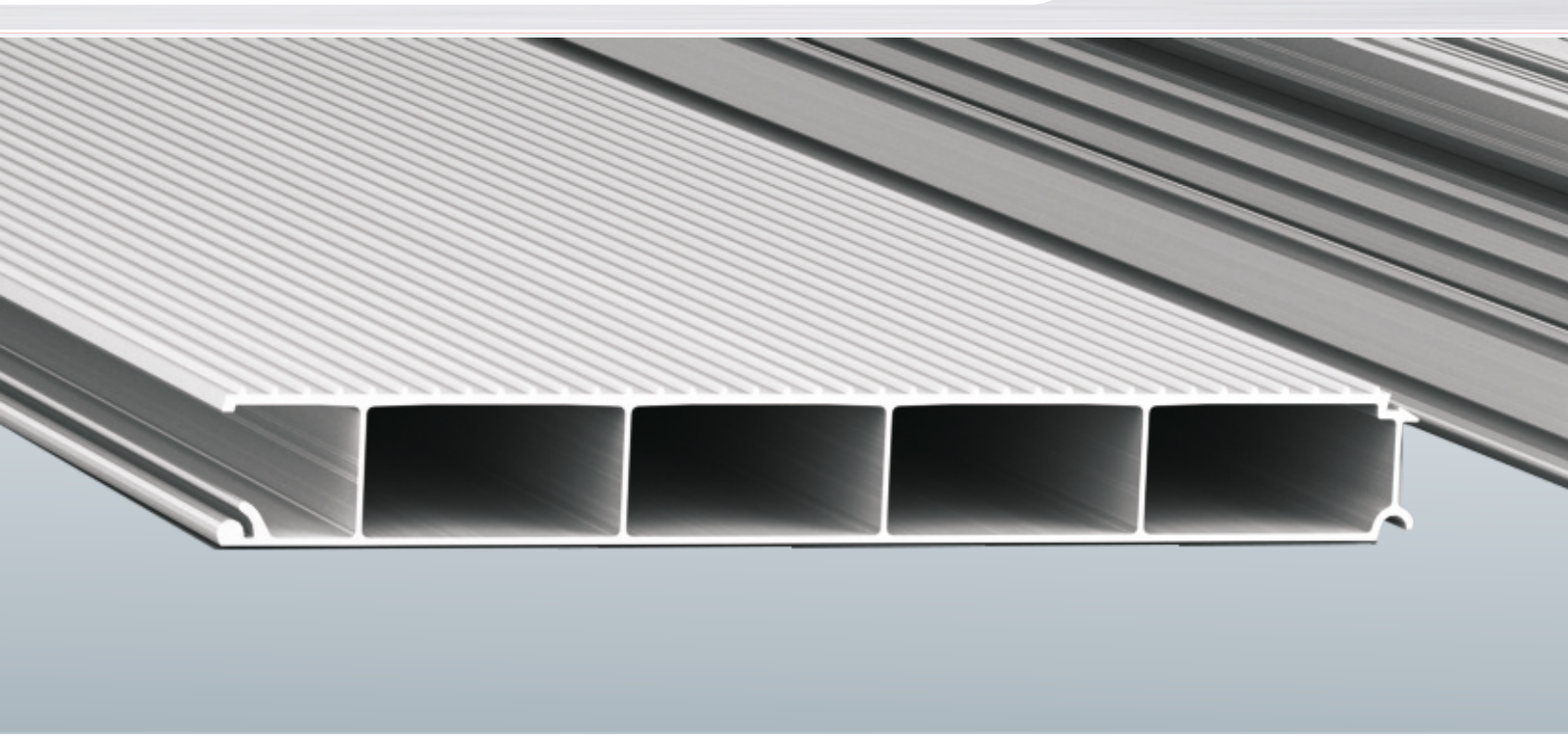
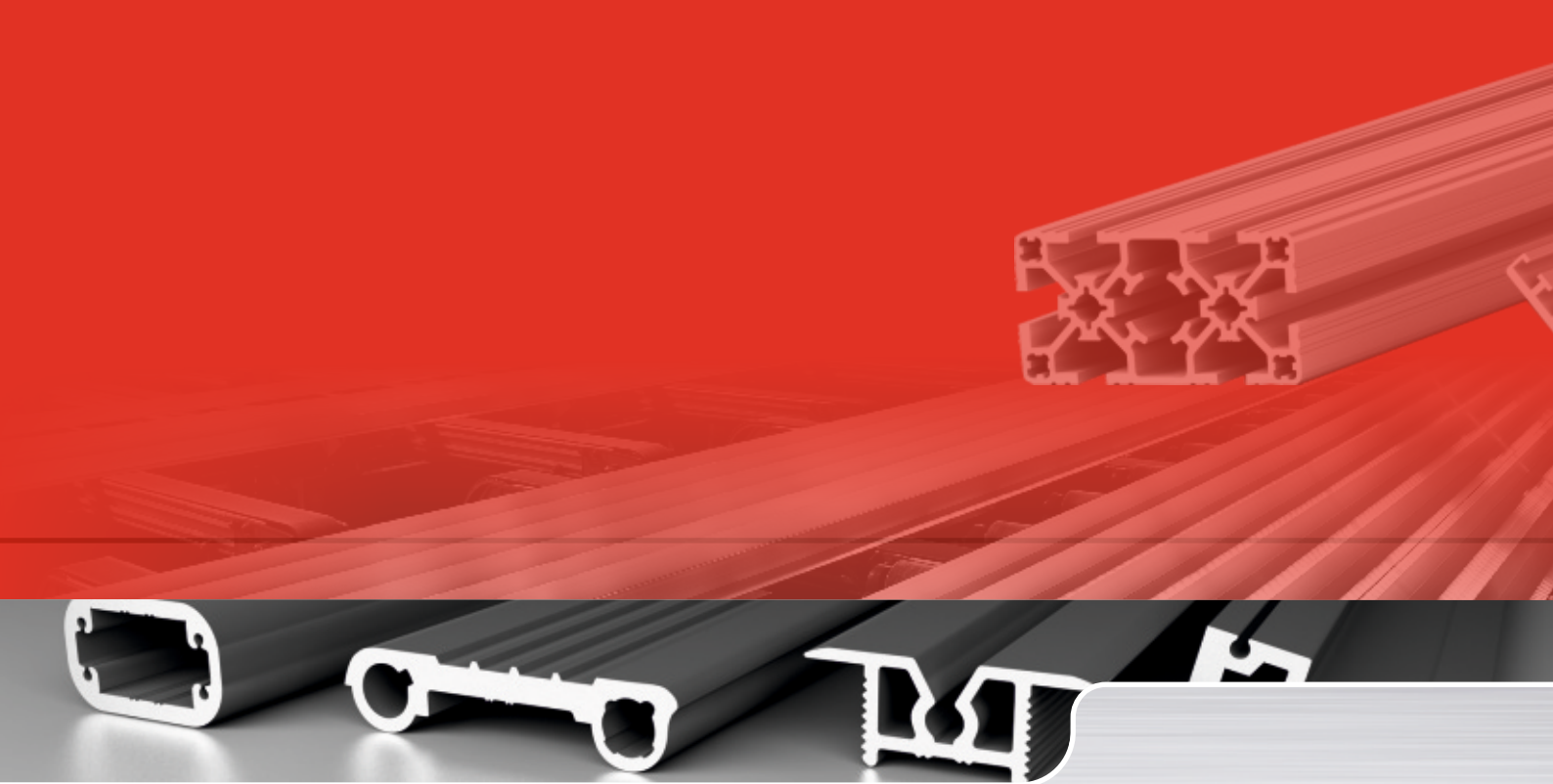
Vimetco Extrusion profiles are being found in various industries and places around the world, from the local market to the USA, Bolivia or Africa.

We cooperate with the main suppliers and consumers at European level and we are successfully involved in unique deliveries, permanently operating in different industries, from light constructions to civil and industrial constructions to solar panels and also in the transportation and automotive industries.



## Certifications, Environment, Sustainability





Aluminium simply essential

**Vimetco Extrusion S.R.L.**

1st Milcov street, 230077 - Slatina, Romania

Phone: +40 249 414 040 | Fax to e-mail: +40 349 814 319

E-mail: [office@vimetcoextrusion.com](mailto:office@vimetcoextrusion.com) | [www: vimetcoextrusion.com](http://www.vimetcoextrusion.com)